

ProControl Addendum

Version 6.4 for Windows and Macintosh

This addendum is a supplement to the *ProControl Guide* version 6.1 for Windows and Macintosh. It documents new and changed features in Pro Tools TDM 6.4 that apply to ProControl.

System Requirements

To use the features described in this Addendum, you need a Pro Tools system qualified to run Pro Tools TDM 6.4.

Compatibility Information

Digidesign can only assure compatibility and provide support for hardware and software it has tested and approved.

For a list of Digidesign-qualified computers, operating systems, hard drives, and third-party devices, refer to the latest compatibility information on the Digidesign Web site (www.digidesign.com/compato).

New Features

Pro Tools 6.4 includes support for the following new or enhanced recording and monitoring features that can be accessed from ProControl:

- Track position numbering
- +12 dB gain level
- TrackInput monitoring
- TrackPunch recording mode

For complete information on these new Pro Tools features, refer to the *Pro Tools Reference Guide*.

Changed Features

Pro Tools 6.4 changes the key commands for the following features on ProControl:

- ◆ Soloing multiple tracks
- ◆ Expanded metering of multichannel tracks
- ◆ Clearing text from the Numeric Keypad

Track Position Numbering

Track Position Numbering assigns each track a number corresponding to its position in the Mix and Edit Windows. When tracks are reordered, they are assigned new position numbers to maintain positional sequence.

This feature adds a new mode, *Track Position Number/Name mode*, to the available display modes for ProControl Channel Scribble Strips.

ProControl Channel Scribble Strips can now display information in the following modes:

Track Name Mode Shows the track name only.

Group/Name Mode Shows the group membership of the track (by group letter) and an abbreviated track name.

Name/Level Mode Shows an abbreviated track name and the track volume level in dB.

Bank Number/Name Mode Shows the ProControl Bank letter and number of the track and an abbreviated track name.

Track Position Number/Name Mode Shows the track position number (even if it is not displayed on-screen) and the track name.

Headroom Mode Shows the abbreviation “HR” followed by the remaining headroom in dB.

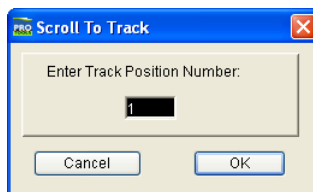
To display track position numbering on ProControl:

- Repeatedly press the DISPLAY MODE switch to toggle the Channel Strip display to Track Position/Name Mode.

To navigate directly to any track on-screen:

- 1 Choose Operations > Scroll To Track Number
– or –

Press Command+Option+G (Macintosh) or Control+Alt+G (Windows)



Scroll To Track dialog

- 2 In the Scroll To Track dialog, enter the track position number for the track.
- 3 Click OK.

To navigate directly to any track from ProControl:

- 1 In the Channel Matrix section, press the GO TO switch.
- 2 Press the Channel Matrix switch that corresponds to the track position number for the track.

The track is moved to the leftmost track on the ProControl surface.

+12 dB Gain Level

With Pro Tools 6.4, you can select either a 6 dB over 0 dB or a 12 dB over 0 dB Fader Gain for all faders in the session. Fader Gain choices can be made when creating, opening, and importing sessions, and when saving a copy of a session.

The ProControl fader section shows a printed scale to +6 dB. However, when Fader Gain is set to +12 dB in Pro Tools, the appropriate volume levels are shown in the ProControl Channel Scribble Strips.

TrackInput Monitoring

TrackInput monitoring lets you toggle individual audio tracks between Auto Input and Input Only monitoring modes at any time, including during playback or recording.

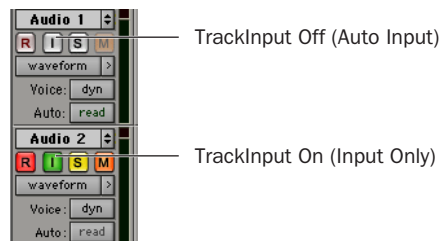
This feature also makes it possible to toggle a track between Auto Input and Input Only monitoring mode regardless of whether or not the track is record enabled.

To toggle the monitoring mode of audio tracks:

- 1 Hold the CTL/CLUTCH switch and press the MON/Ø (Monitor/Phase) switch in the Select/Assign section. The switch flashes to indicate ProControl is in “Select Input Monitoring” mode.
- 2 Do one of the following:
 - To toggle individual tracks, press the PRE/POST/ASSIGN switch on each channel you want to toggle.
 - To toggle all tracks in the session, hold the OPT(ALT) ALL switch and press the MON/Ø switch.
 - To toggle all selected tracks in the session, hold the SHIFT/ADD + OPT(ALT)ALL switches and press the MON/Ø switch.

- 3 Press the Pan switch in the Select/Assign section to exit Select Input Monitoring mode.

On ProControl, the PRE/POST/ASSIGN switch lights to indicate Input Only mode. On-screen, the Track Input button lights green to indicate Input Only mode.



TrackInput buttons in the Edit Window

To change the monitoring mode of all record-enabled tracks on ProControl:

- Press the MON/Ø (Monitor/Phase) switch in the Select Assign section. All record-enabled tracks will toggle between Auto Input and Input Only mode. This switch lights when any track is in Input Only mode.

TrackPunch Audio Recording

TrackPunch is a recording mode that lets you instantaneously *punch in* (start recording) and *punch out* (stop recording) on individual audio tracks during playback. When a track is TrackPunch-enabled, Pro Tools starts recording a new file in the background for that track when playback begins.

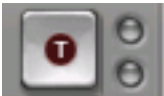
You can then punch in on that track at any time during playback by record enabling the track. Pro Tools automatically creates a region in the track playlist at each punch-in point. These regions also appear in the Audio Regions List along with the complete audio file. Up to 200 of these “running punches” can be performed in a single pass.

Enabling TrackPunch Mode

Before you can enable individual audio tracks for TrackPunch recording, TrackPunch mode must be enabled in the Pro Tools transport.

To enable TrackPunch mode from ProControl:

- 1 Make sure Pro Tools is not recording or playing back (the Transport is stopped).
- 2 Hold the CTRL/CLUTCH switch and repeatedly press the Transport Record switch to toggle the on-screen Transport Record button to show a “T” to indicate TrackPunch mode.



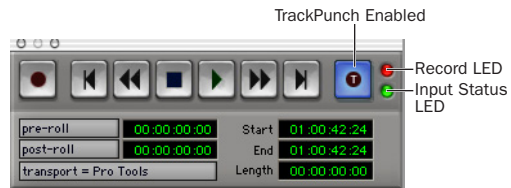
Transport Record button showing TrackPunch mode

TrackPunch Mode Indicators

ProControl does not have a TrackPunch indicator. The on-screen Transport window has several indicators that show TrackPunch status.

When TrackPunch mode is enabled:

- ◆ A “T” appears in the on-screen Transport Record button.
- ◆ If at least one track is TrackPunch-enabled, the on-screen Transport Record button lights solid blue.



TrackPunch indicators in the Transport window

When TrackPunch mode is enabled and the transport is armed for recording:

- ◆ If no tracks are TrackPunch-enabled, the on-screen Transport Record button flashes gray and red.
- ◆ If at least one track is TrackPunch-enabled, the on-screen Transport Record button flashes blue and red.
- ◆ If at least one TrackPunch-enabled track is also record enabled, the on-screen Transport Record button flashes blue and red, and the record LED lights.
- ◆ Whenever at least one audio track is recording, the on-screen Transport Record button lights solid red.

Enabling Tracks for TrackPunch Recording

Before you can punch in on a track during playback, it must be TrackPunch enabled while the transport is stopped.

TrackPunch Enabling Tracks

You can TrackPunch enable tracks without record enabling them, which lets you punch in individual tracks after you start playback.

To TrackPunch enable or disable an audio track:

- Hold the CTL/CLUTCH switch and press the track's REC/READY switch to toggle the track's on-screen Record Enable button to solid blue.

To TrackPunch enable or disable all audio tracks:

- Hold the CTL/CLUTCH + OPT (ALT) ALL switches and press any track's REC/READY switch to toggle the on-screen Record Enable buttons to solid blue.

To TrackPunch enable all selected audio tracks:

- Hold the SHIFT/ADD + CTL/CLUTCH + OPT (ALT) ALL switches and press a selected track's REC/READY switch twice to toggle the on-screen Record Enable buttons to solid blue.

TrackPunch and Record Enabling Tracks

You can simultaneously TrackPunch enable tracks and record enable them, which starts recording as soon as playback begins.

To simultaneously TrackPunch enable and record enable an audio track:

- Press the track's REC/READY switch to toggle the track's on-screen Record Enable button to flashing blue and red.

To simultaneously TrackPunch enable and record enable all audio tracks:

- Hold the OPT (ALT) ALL switch and press any track's REC/READY switch to toggle the on-screen Record Enable buttons to flashing blue and red.

To simultaneously TrackPunch enable and record enable all selected audio tracks:

- Hold the SHIFT/ADD + OPT (ALT) ALL switches and press a selected track's REC/READY switch to toggle the on-screen Record Enable buttons to flashing blue and red.

Track Record Status Display

Each track's on-screen Record Enable button indicates its TrackPunch and record enable status as follows:

- When a track is both TrackPunch-enabled and record-enabled, its on-screen Record enable button flashes blue and red.



Record Enable button

TrackPunch status indication in an audio track in the Mix window

- When a track is TrackPunch-enabled but not record-enabled, its on-screen Record Enable button lights solid blue.
- When a track is record-enabled only, its on-screen Record Enable button flashes red.
- While a track is recording (in any mode), its on-screen Record Enable button lights solid red.



Red (not flashing) indicates recording (all modes)

Track Record status in the Edit window

TrackPunch Recording

After you have put Pro Tools in TrackPunch mode, and enabled tracks for TrackPunch recording, you can record with TrackPunch in several ways.

Punching In On Single Tracks

To punch in on single tracks:

- 1 Put Pro Tools in TrackPunch mode.
- 2 Press the REC/READY switch twice on each track you want to punch in, so that the track is TrackPunch-enabled only. The track's on-screen Record Enable button lights solid blue.
- 3 Press the RECORD and PLAY switches on the ProControl transport to start playback.
- 4 During playback, punch in and out on individual TrackPunch-enabled tracks by pressing their REC/READY switches.
- 5 Stop playback. When you are finished with the record pass, track Record Enable status and transport Record Arm status follow the current TrackPunch preference settings.

Punching In on Multiple Tracks

To punch in on multiple tracks simultaneously:

- 1 Put Pro Tools in TrackPunch mode.
- 2 Press the REC/READY switch on each track you want to punch in, so that the track is both TrackPunch- and Record-enabled. The track's on-screen Record Enable button should flash blue and red.
- 3 Press the PLAY switch on the ProControl transport to start playback.
- 4 During playback, press the RECORD switch on the ProControl transport to punch in and out on all TrackPunch-enabled tracks simultaneously.
- 5 Stop playback. When you are finished with the record pass, track Record Enable status and transport Record Arm status follow the current TrackPunch preference settings.

Start Recording on All Tracks

- 1 Put Pro Tools in TrackPunch mode.
- 2 Press the REC/READY switch on each track you want to punch in, so that the track is both TrackPunch- and Record-enabled. The track's on-screen Record Enable button should flash blue and red.
- 3 Press the RECORD and PLAY switches on the ProControl transport to start recording on all record-enabled tracks.
- 4 During playback, punch out and back in on individual TrackPunch-enabled tracks by pressing their REC/READY switches.
- 5 Stop playback. When you are finished with the record pass, track Record Enable status and transport Record Arm status follow the current TrackPunch preference settings.

Soloing Multiple Tracks

When solo latching is turned off (when the Latch Solo Buttons option is deselected in the Operation preferences), the Solo buttons follow exclusive-or behavior.

You can now solo multiple tracks while this preference is off by holding the SHIFT/ADD switch and pressing the SOLO switch for each track.

Metering Multichannel Tracks

By default, the two meters on each ProControl channel show the left and center levels for multichannel tracks.

Multichannel tracks can be temporarily metered in expanded view, distributing the metering of the track across adjacent pairs of meters to the right, up to a maximum of eight meters (which lets you view up to 7.1 channels).

To meter a multichannel path:

- While Pro Tools is playing back, press ⌘(CTL) + CTL/CLUTCH + SOLO.

Clearing Text Entries from the Numeric Keypad

The CLR key in the ProControl Numeric Keypad now mirrors the function of the Backspace key (Windows) or the Delete key (Macintosh), and clears text from on-screen text boxes.

Copyright

This document is copyrighted ©2004 by Digidesign, a division of Avid Technology, Inc. (hereafter "Digidesign"), with all rights reserved. Under copyright laws, this document may not be duplicated in whole or in part without the written consent of Digidesign.

DIGIDESIGN, AVID and PRO TOOLS are trademarks or registered trademarks of Digidesign and/or Avid Technology, Inc. All other trademarks are the property of their respective owners.

Product features, specifications, system requirements, and availability are subject to change without notice.

PN 932013291-00 REV A 04/04